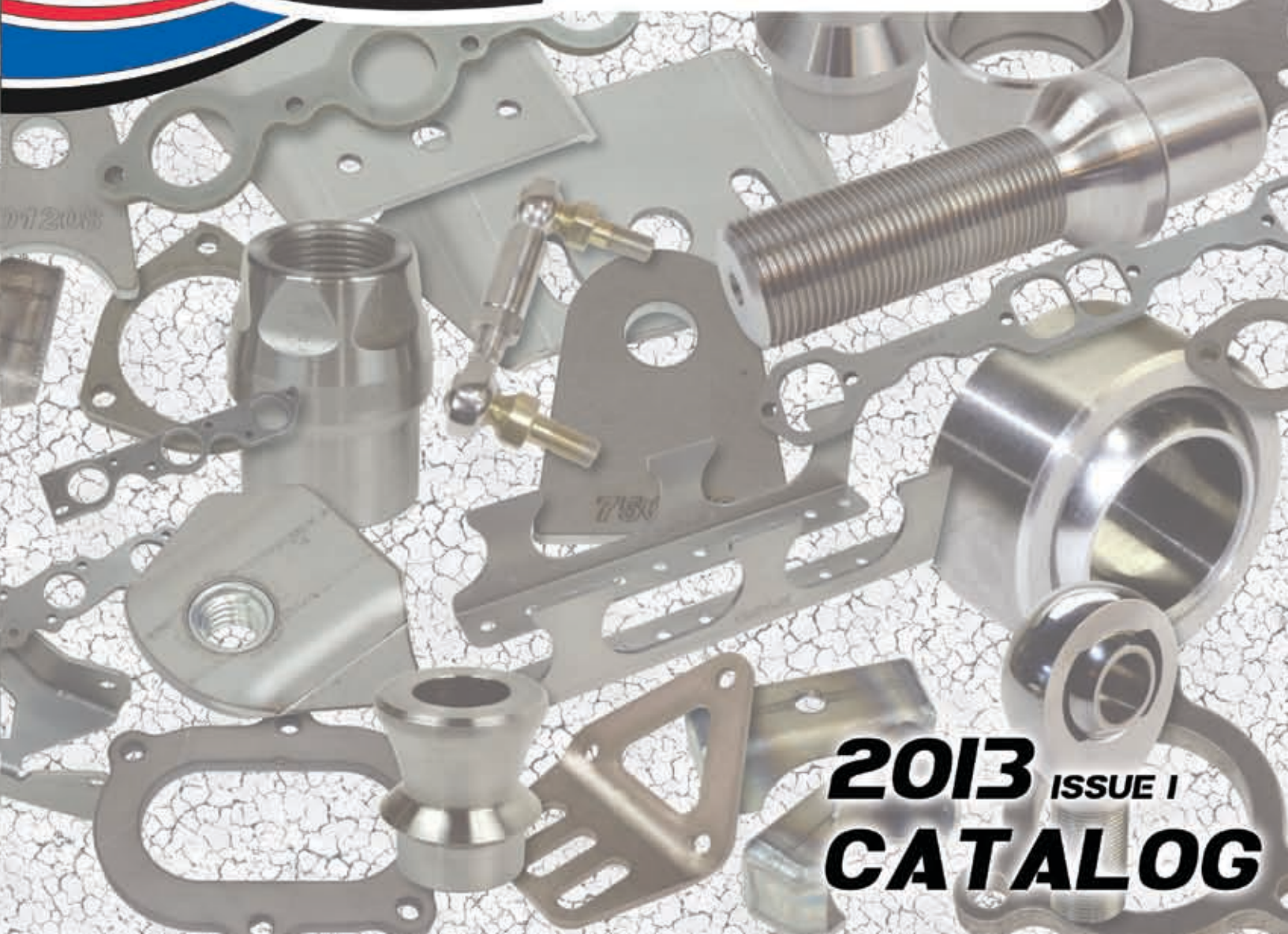




tabzone

CHASSIS COMPONENTS



2013 ISSUE 1
CATALOG



Welcome to TABZONE.com, where the possibilities are endless.

We offer you the following services:

- Design and Engineering
- Solid Works 3D Modeling
- Full Reverse Engineering Ability
- Precision CNC Laser
- CNC Press Brake
- CNC Machining
- Mig and Tig Welding

CNC MACHINING



CNC FORMING



PRECISION LASER CUTTING



TIG / MIG WELDING



Materials we stock for our products.

- Wide variety of pickled and oiled mild steel
- 4130 Chromoly
- Aluminum
- Stainless Steel

We manufacture and fabricate on-site in our 10,000 square foot Prescott AZ facility. We have invested in some of the best equipment providing us the ability to serve our customers' needs.

If you are building a race car from the ground up or simply need a few tabs for repairs.... We have what you need.

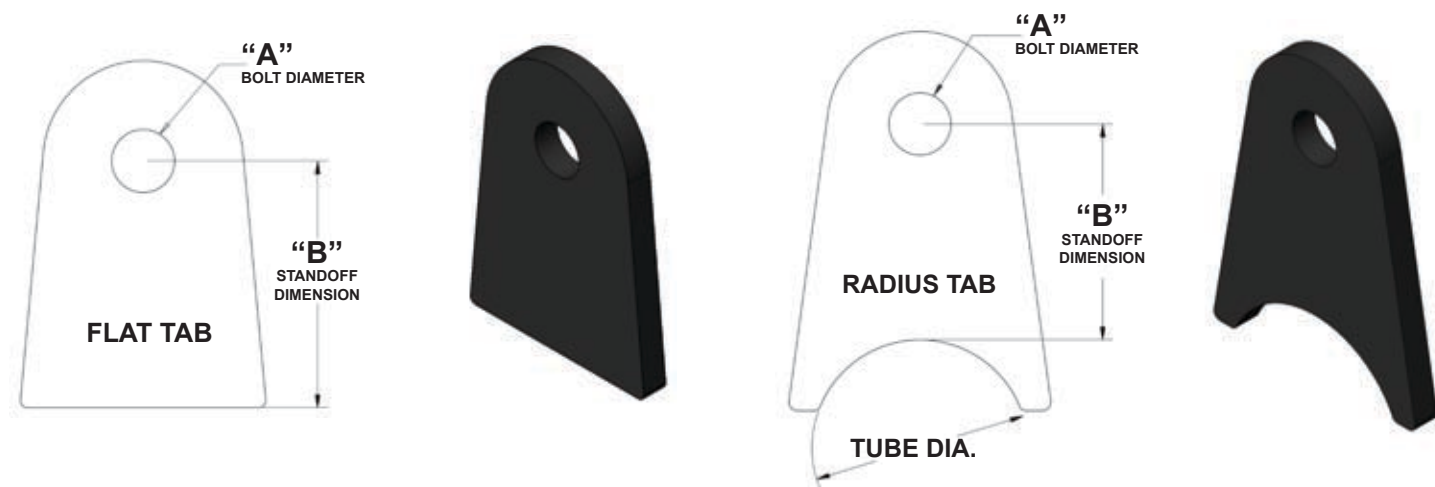
www.TABZONE.com... Go Get Ya Some!

TABLE OF CONTENTS



FLAT & RADIUS CHASSIS TABS	1 - 2
GUSSETS	3 - 4
WELD ON REINFORCEMENTS	4
TRICK TABS & MOUNTING BRACKETS	5 - 6
SUSPENSION PIVOT CLIPS	7
SAND CAR PARTS	8 - 9
HUB FLANGES	10
TUBE CONNECTORS FLANGES	11
MISC. TABS	11
SEAT MOUNTS	12
TUBE CLAMSHELL HALVES	12
CHANNEL BRACKETS	13
SHOCK AND SPRING MOUNTS	14
MOUNTING TABS	15
AXLE BRACKETS	16
MISC. MOUNTS	17
HD TABS	18
LINK MOUNTS & TRAILING ARM PARTS	19-20
HIGH ANGLE MISALIGNMENT SPACER	21
LOW ANGLE MISALIGNMENT SPACER	22
BEARING CUPS AND HOUSINGS	23
TUBE ADAPTERS	24-26
FABRICATION PARTS	27-28
EXHAUST HEADER FLANGES	29-32
EXHAUST TURBO FLANGES	33-34
TERMS AND CONDITIONS	35



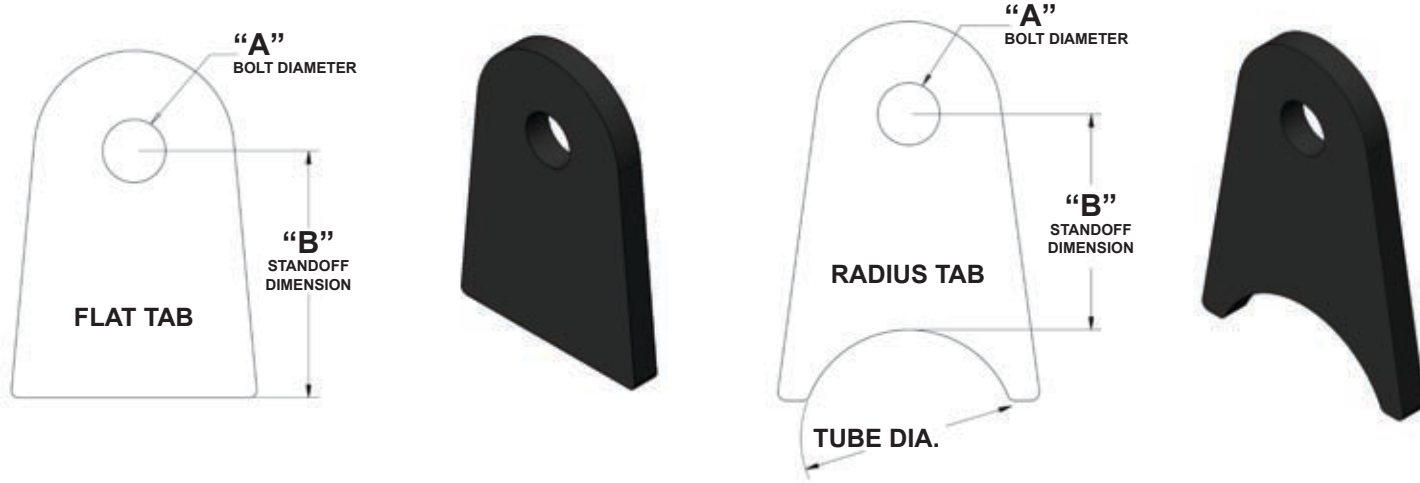


1/4", 5/16" & 3/8" BOLT DIAMETER

A	B	FLAT TABS	3/4" TUBE DIA.	1" TUBE DIA.	1 1/4" TUBE DIA.	1 1/2" TUBE DIA.	1 3/4" TUBE DIA.	2" TUBE DIA.
1/4" BOLT	1/2"	250004	250604	250804	251004	251204	251404	251604
	3/4"	250006	250606	250806	251006	251206	251406	251606
	1"	250008	250608	250808	251008	251208	251408	251608
	1 1/4"	250010	250610	250810	251010	251210	251410	251610
	1 1/2"	250012	250612	250812	251012	251212	251412	251612
	1 3/4"	250014	250614	250814	251014	251214	251414	251614
	2"	250016	250616	250816	251016	251216	251416	251616
5/16" BOLT	3/4"	310006	310606	310806	311006	311206	311406	311606
	1"	310008	310608	310808	311008	311208	311408	311608
	1 1/4"	310010	310610	310810	311010	311210	311410	311610
	1 1/2"	310012	310612	310812	311012	311212	311412	311612
	1 3/4"	310014	310614	310814	311014	311214	311414	311614
	2"	310016	310616	310816	311016	311216	311416	311616
3/8" BOLT	3/4"	380006	380606	380806	381006	381206	381406	381606
	1"	380008	380608	380808	381008	381208	381408	381608
	1 1/4"	380010	380610	380810	381010	381210	381410	381610
	1 1/2"	380012	380612	380812	381012	381212	381412	381612
	1 3/4"	380014	380614	380814	381014	381214	381414	381614
	2"	380016	380616	380816	381016	381216	381416	381616
	2 1/4"	380018	380618	380818	381018	381218	381418	381618
	2 1/2"	380020	380620	380820	381020	381220	381420	381620

NOTE: TABZONE PRODUCES MANY DIFFERENT BOLT DIA, TUBE DIA, AND STANDOFF TABS. IF YOU DON'T SEE A SIZE HERE, PLEASE CONTACT US. WE MAY HAVE IT IN STOCK OR WE CAN PRODUCE IT.

CHASSIS TABS



1/2", 5/8" & 3/4" BOLT DIAMETER

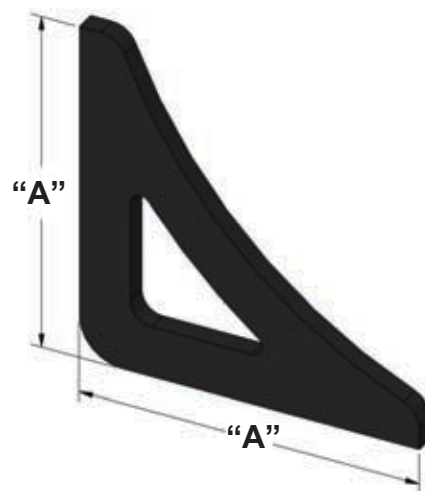
A	B	FLAT TABS	1 1/4" TUBE DIA.	1 1/2" TUBE DIA.	1 3/4" TUBE DIA.	2" TUBE DIA.	2 1/2" TUBE DIA.	3" TUBE DIA.
1/2" BOLT	1"	500008	501008	501208	501408	501608	502008	502408
	1 1/4"	500010	501010	501210	501410	501610	502010	502410
	1 1/2"	500012	501012	501212	501412	501612	502012	502412
	1 3/4"	500014	501014	501214	501414	501614	502014	502414
	2"	500016	501016	501216	501416	501616	502016	502416
	2 1/4"	500018	501018	501218	501418	501618	502018	502418
	2 1/2"	500020	501020	501220	501420	501620	502020	502420

A	B	FLAT TABS	1 3/4" TUBE DIA.	2" TUBE DIA.	2 1/2" TUBE DIA.	3" TUBE DIA.	3 1/2" TUBE DIA.	4" TUBE DIA.
5/8" BOLT	1 1/2"	620012	621412	621612	622012	622412	622812	623212
	1 3/4"	620014	621414	621614	622014	622414	622814	623214
	2"	620016	621416	621616	622016	622416	622816	623216
	2 1/4"	620018	621418	621618	622018	622418	622818	623218
	2 1/2"	620020	621420	621620	622020	622420	622820	623220
3/4" BOLT	2"	750016	751416	751616	752016	752416	752816	753216
	2 1/4"	750018	751418	751618	752018	752418	752818	753218
	2 1/2"	750020	751420	751620	752020	752420	752820	753220
	2 5/8"	750021	751421	751621	752021	752421	752821	753221
	2 3/4"	750022	751422	751622	752022	752422	752822	753222
	3"	750024	751424	751624	752024	752424	752824	753224

NOTE: TABZONE PRODUCES MANY DIFFERENT BOLT DIA, TUBE DIA, AND STANDOFF TABS. IF YOU DON'T SEE A SIZE HERE, PLEASE CONTACT US. WE MAY HAVE IT IN STOCK OR WE CAN PRODUCE IT.

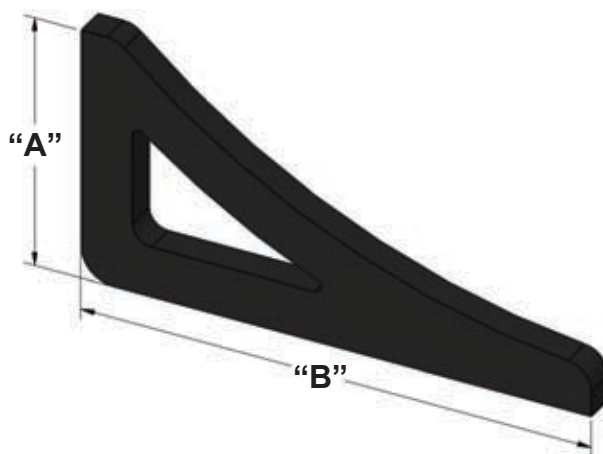
EQUAL LENGTH GUSSETS

A	1/8" THICK EQUAL SIDES	3/16" THICK EQUAL SIDES
1 1/4"	12250-0	N/A
1 1/2"	12250-1	12251-1
2"	12250-2	12251-2
2 1/2"	12250-3	12251-3
3"	12250-4	12251-4
3 1/2"	12250-5	12251-5
4"	12250-6	12251-6



UNEQUAL LENGTH GUSSETS

A	B	1/8" THICK	3/16" THICK
1 1/2"	3"	12252-1	12253-1
2"	3"	12252-2	12253-2
	3 1/2"	12252-3	12253-3
	4"	12252-4	12253-4
	5"	12252-5	12253-5
3"	3 1/2"	12252-6	12253-6
	4"	12252-7	12253-7
	5"	12252-8	12253-8

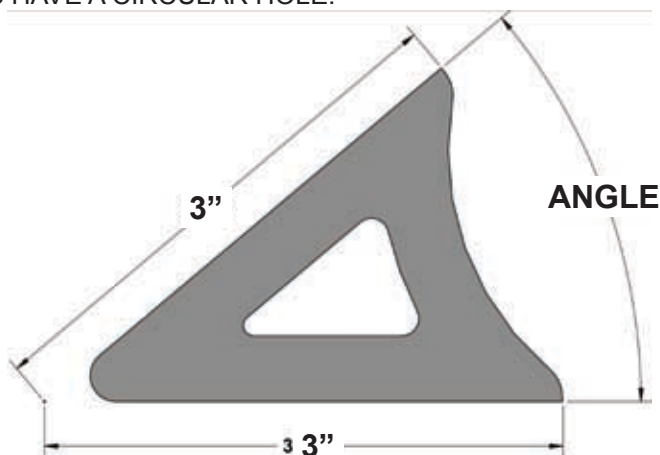


ANGLED GUSSETS

1/8" THICK / EQUAL 3" SIDES

40 DEGREES	12255-1
50 DEGREES	12255-2
60 DEGREES	12255-3
70 DEGREES	12255-6
80 DEGREES	12255-7
105 DEGREES	12255-8
110 DEGREES	12255-9
120 DEGREES	12255-10

NOTE: ANGLED GUSSETS GREATER THAN 90 DEGREES HAVE A CIRCULAR HOLE.



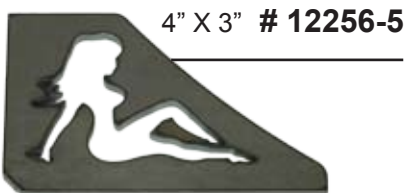
GUSSETS AND REINFORCEMENTS



3" X 3" # 12256-10
4" X 4" # 12256-11



3" X 3" # 0303
4" X 4" # 0404



4" X 3" # 12256-15

WELD ON REINFORCEMENTS

1/2" ID X 1"OD	12293-1
9/16" ID X 1"OD	12293-2
5/8" ID X 1 1/8"OD	12293-3
3/4" ID X 1 1/4"OD	12293-4

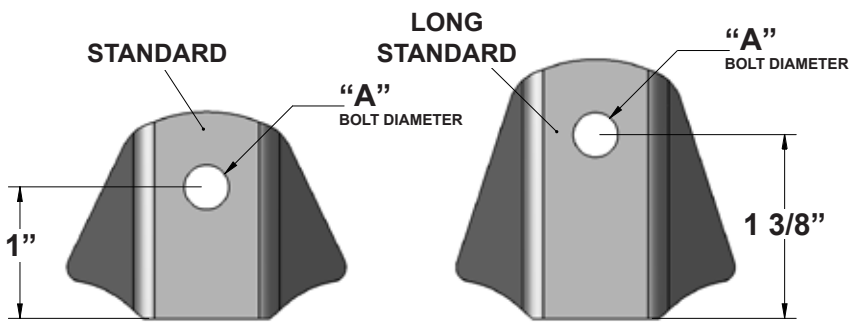


7/8" OD X 2 1/4" # 12295-1

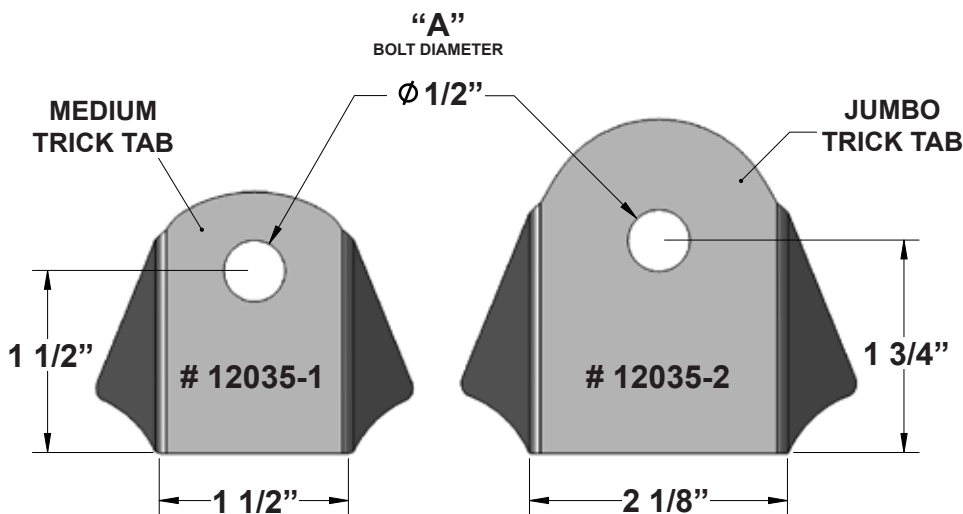
WELD ON REINFORCEMENTS

1/2" ID X 1 1/8"OD X 2 7/8" LONG	12294-1
9/16" ID X 1 1/8"OD X 2 7/8" LONG	12294-2
5/8" ID X 1 1/4"OD X 2 7/8" LONG	12294-3
3/4" ID X 1 1/4"OD X 2 7/8" LONG	12294-4





A	STANDARD	LONG STANDARD
1/4"	12025	12026
5/16"	12027	12028
3/8"	12029	12030
7/16"	12031	12032
1/2"	12033	12034



A	MEDIUM	JUMBO
1/2"	12035-1	12035-2



BOLT DIA.	STAND OFF	PART #
1/4"	1"	12023A
5/16"	1"	12023B
3/8"	1"	12023C



MOUNTING BRACKETS



HELLA HID LIGHT MOUNT
12035-5



LONG HELLA HID LIGHT MOUNT
12035-6

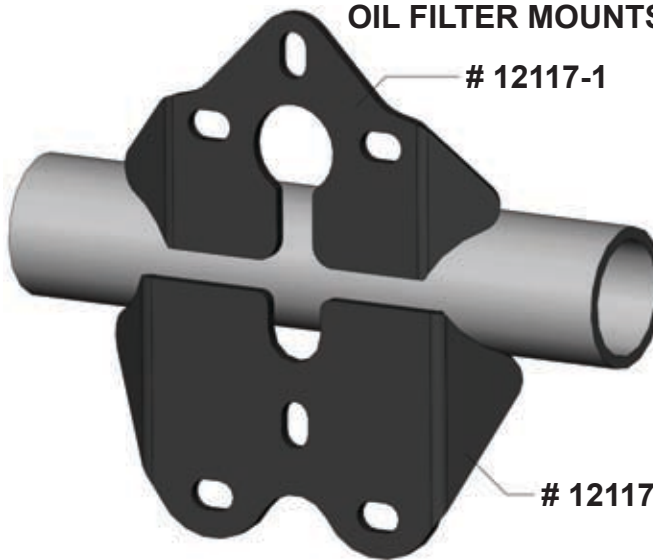


KC POD LIGHT MOUNT
12035-8



OIL FILTER MOUNTS 1/8"

12117-1



12117-2

WHIP MOUNTS

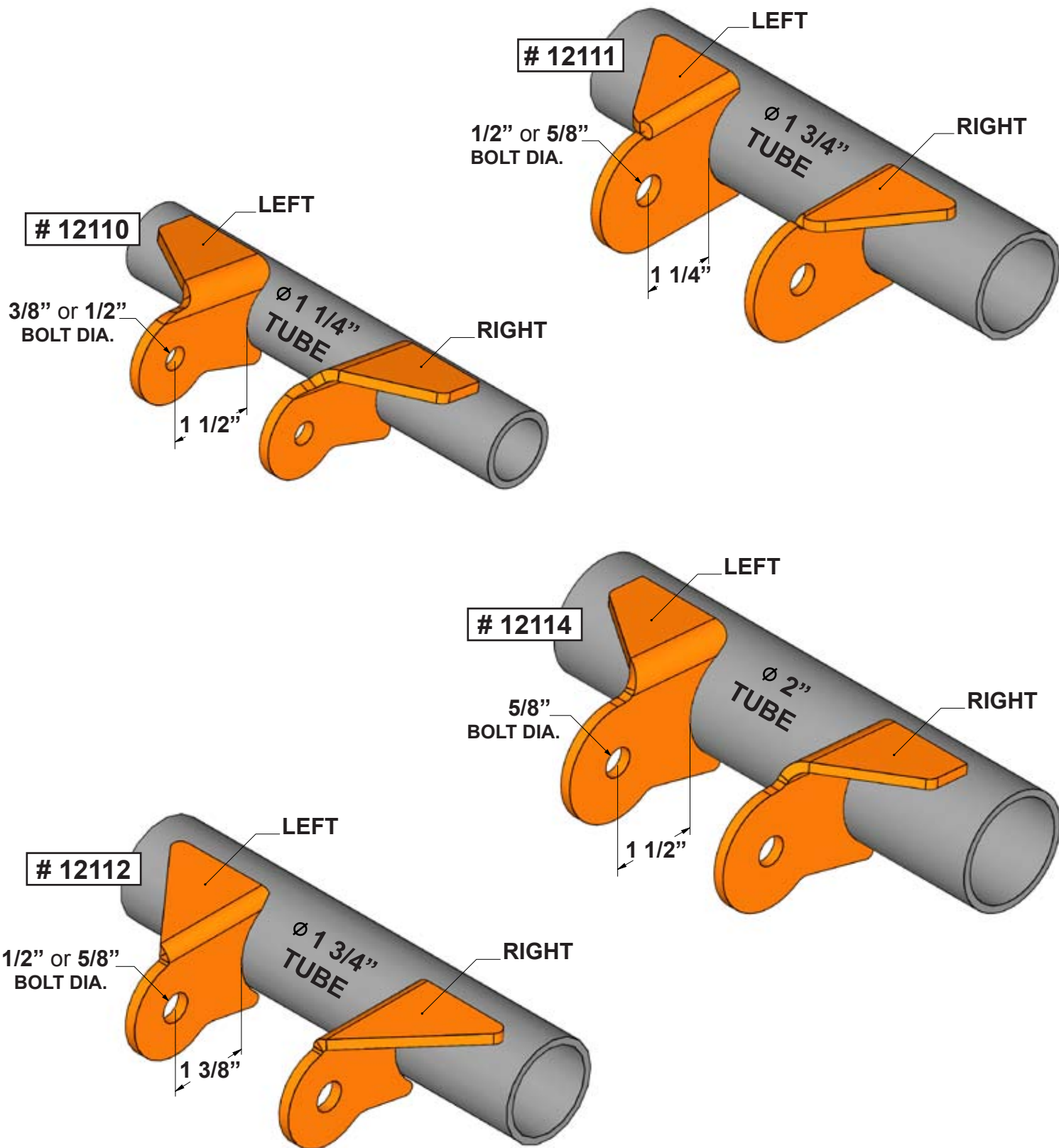


12301-1



12301-2

SUSPENSION PIVOT CLIPS



SAND CAR PARTS



12036-1



12036-2



12036-3



BUS MOUNT 3/16" MILD STEEL # 12037-1



BUS MOUNT 1/4" MILD STEEL # 12037-2



MID BUS MOUNT 1/4" MILD STEEL # 12037-3



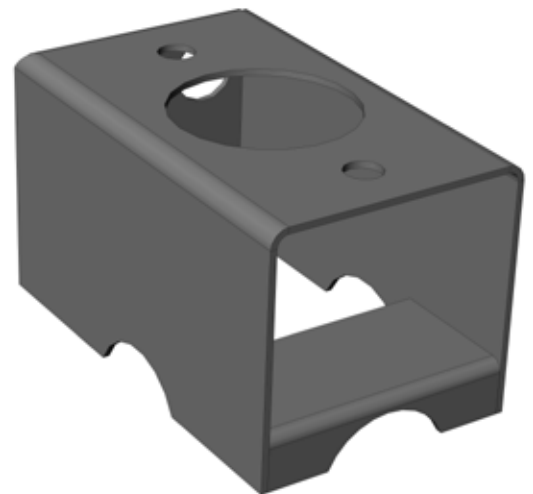
MENDIOLA REAR MOUNT 1/4" MILD STEEL # 12038-1



MENDIOLA FRONT MOUNT 1/4" MILD STEEL # 12038-2

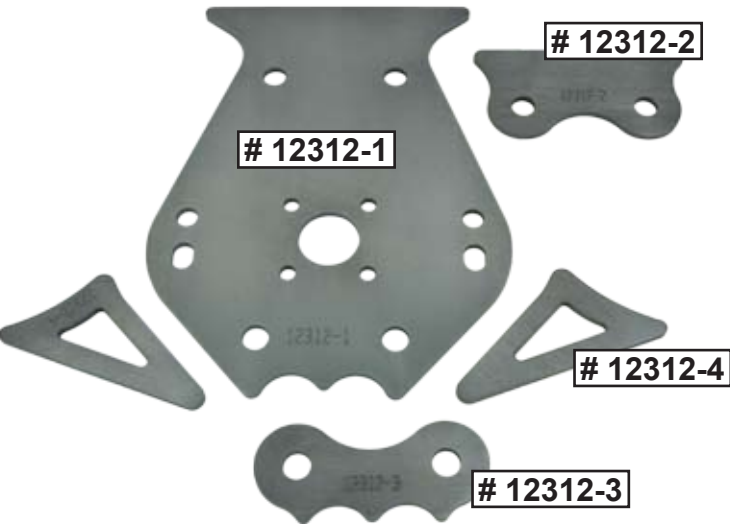


MID BUS MOUNT 3/16" MILD STEEL # 12041

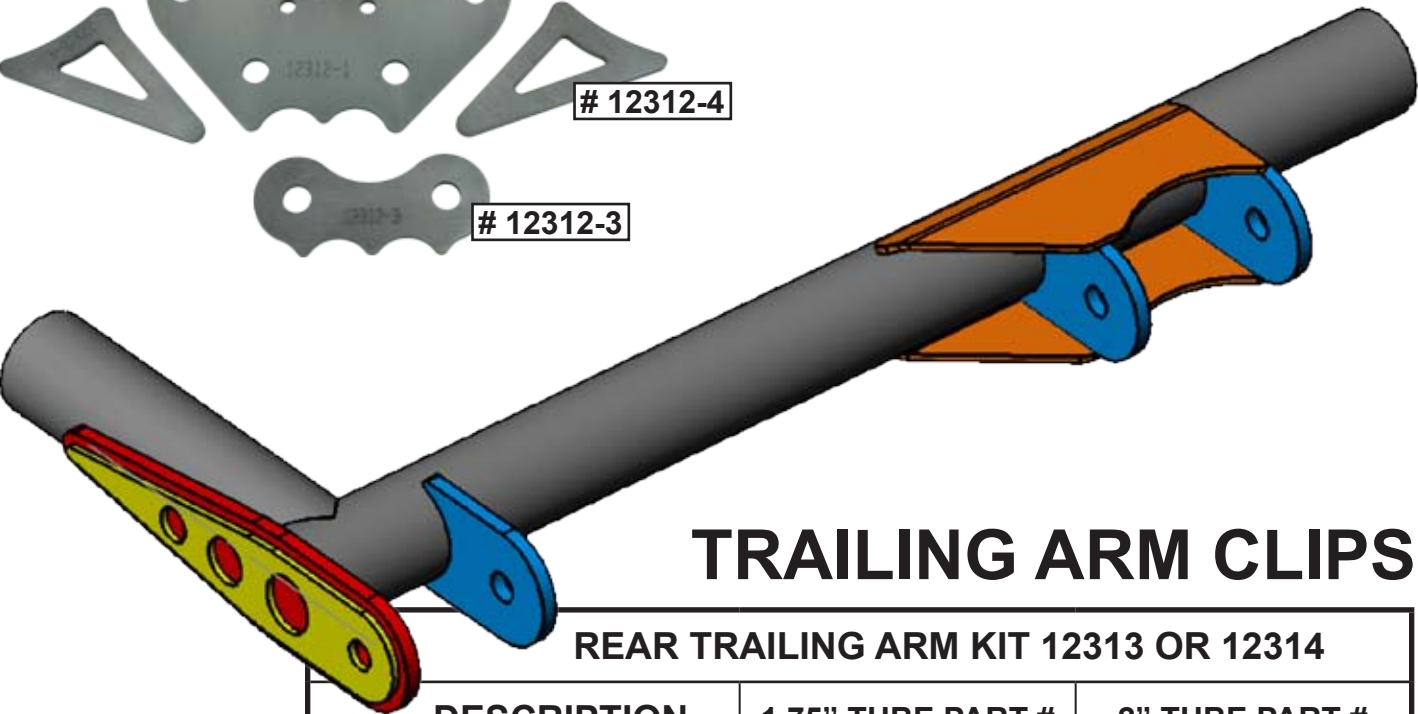


SHIFTER BOX # 12050

FRONT A-ARM BRACKETS



SMALL A-ARM BULKHEAD

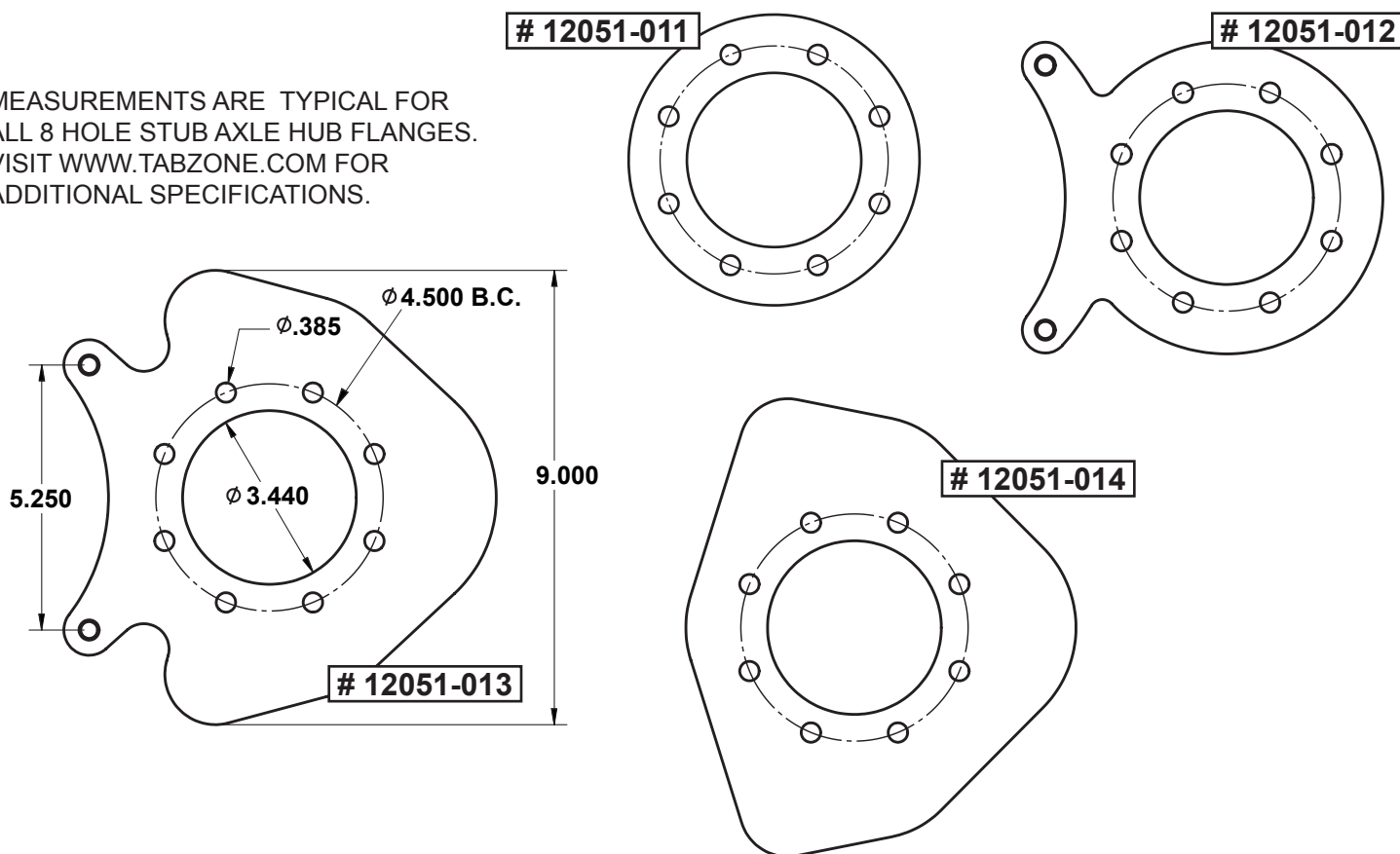


TRAILING ARM CLIPS

REAR TRAILING ARM KIT 12313 OR 12314		
DESCRIPTION	1.75" TUBE PART #	2" TUBE PART #
OUTBOARD PIVOT PLATE	12313-1	12314-1
REINFORCMENT PLATE	12313-1CAP	12314-1CAP
INBOARD PIVOT TABS	12313-2	12314-2
INBOARD PIVOT GUSSET	12313-3	12314-3

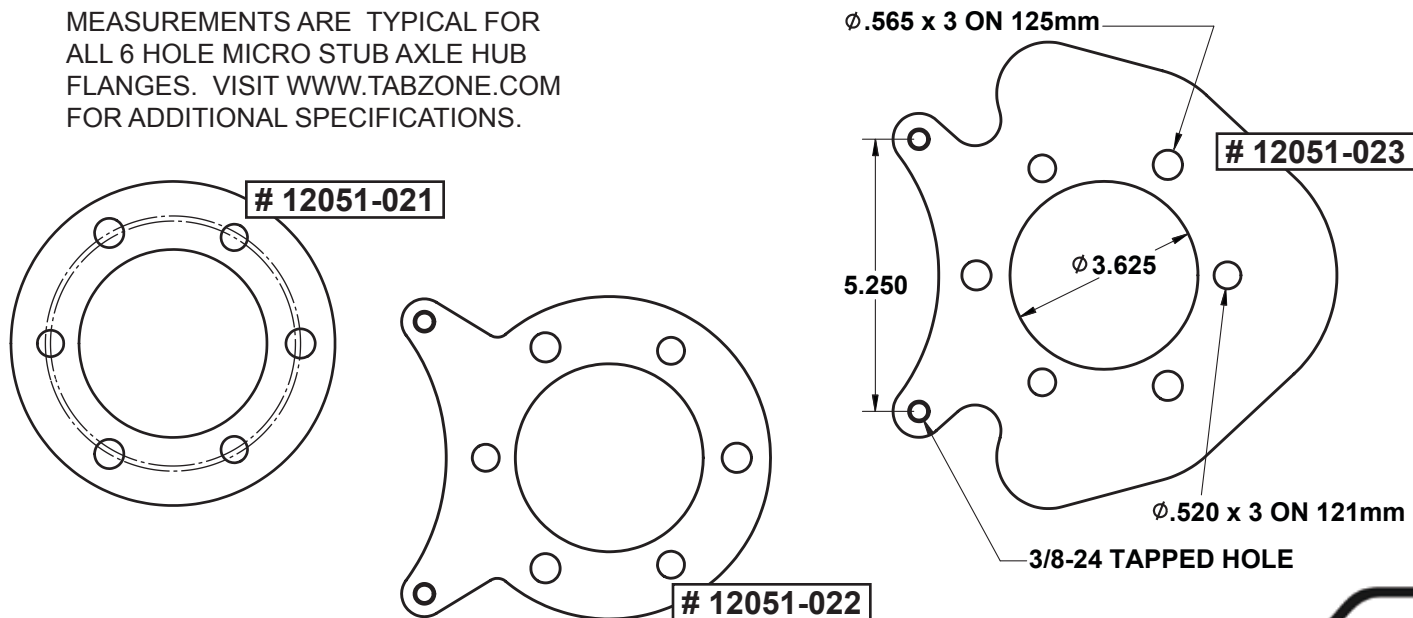
8 HOLE STUB AXLE HUB FLANGE

MEASUREMENTS ARE TYPICAL FOR ALL 8 HOLE STUB AXLE HUB FLANGES. VISIT WWW.TABZONE.COM FOR ADDITIONAL SPECIFICATIONS.



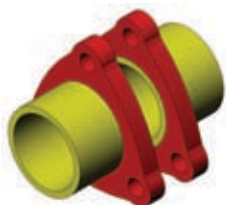
6 HOLE MICRO STUB AXLE HUB FLANGE

MEASUREMENTS ARE TYPICAL FOR ALL 6 HOLE MICRO STUB AXLE HUB FLANGES. VISIT WWW.TABZONE.COM FOR ADDITIONAL SPECIFICATIONS.



TUBE CONNECTOR FLANGES. 1/4" THICK

1 1/4" DIA.	12064-1
1 1/2" DIA.	12064-2
1 5/8" DIA.	12064-3
1 3/4" DIA.	12064-4
2" DIA.	12064-5



2" STANDOFF

1/4" BOLT	12292-1
5/16" BOLT	12292-2
3/8" BOLT	12292-3



90 DEGREE GUSSETED

1/4" BOLT	12069-1
5/16" BOLT	12069-2
3/8" BOLT	12069-3
1/2" BOLT	12069-4
3/8" X 1" SLOT	12069-5



12069-4



12069-5

CNC PEDAL MOUNTS



12070



12071



12072

DZUS SPRING PLATES



12074-1



12074-2



12074-4



12074-5

TIE DOWN
MOUNT
12077-1

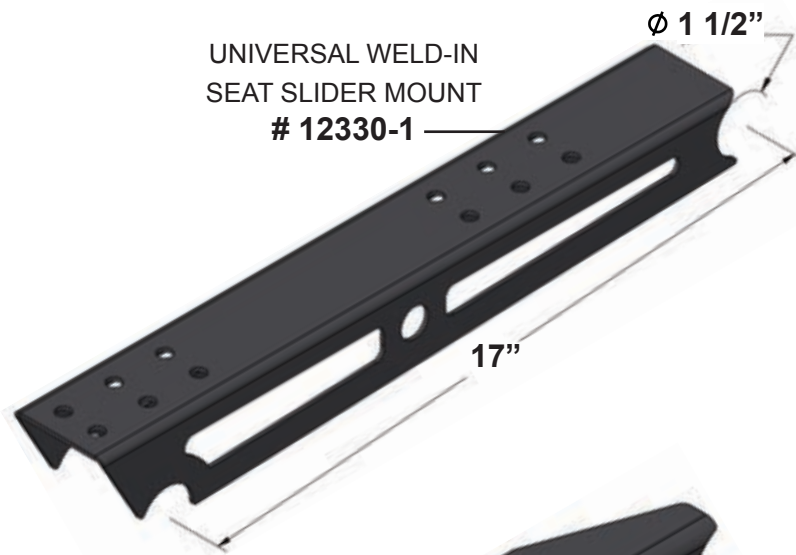


TIE DOWN
MOUNT
12077-2



3/8" HD TIE DOWN
MOUNT # 12077-3

SEAT MOUNTS



UNIVERSAL WELD-IN
SEAT SLIDER MOUNT
12330-1

3/16" THICK WELD-IN SEAT SLIDER
MOUNTS FORMED LEFTS & RIGHTS
12330-2



3/16" THICK DOUBLE ROW
FOR WIDE SEATS
FORMED LEFTS & RIGHTS
12330-3

TUBE CLAMSHELL HALVES

TUBE DIA.	LENGTH	CLAMP-ON PART #	BOLT-ON PART #
1 1/2"	3"	12352-1	12352-1B
	4"	12352-2	12352-2B
	5"	12352-3	12352-3B
1 3/4"	3"	12354-1	12354-1B
	4"	12354-2	12354-2B
	5"	12354-3	12354-3B
	6"	12354-4	12354-4B
2"	4"	12356-2	12356-2B
	5"	12356-3	12356-3B
	6"	12356-4	12356-4B





STEER SHAFT
SUPPORT
12073



12410-01

SLOT STAND OFF	PART #
1 1/4"	12408-01
2"	12408-02
3"	12408-03
4"	12408-04
5"	12408-05



12403-02



12403-01



12403-04



12403-03

SHOCK / SPRING MOUNTS



JEEP TJ REAR
SHOCK MOUNTS
12078-L, # 12078-R



12080-1



12080-3

SPRING PERCH		
TUBE DIA.	DESCRIPTION	PART #
2 1/4"	2 1/4" DIA. X 1 3/4" WIDE	12080-1
2 1/4"	2 1/4" DIA. X 2" WIDE	12080-2
3"	3" DIA. X 2 1/5" WIDE	12080-3
3"	3" DIA. X 3" WIDE	12080-4

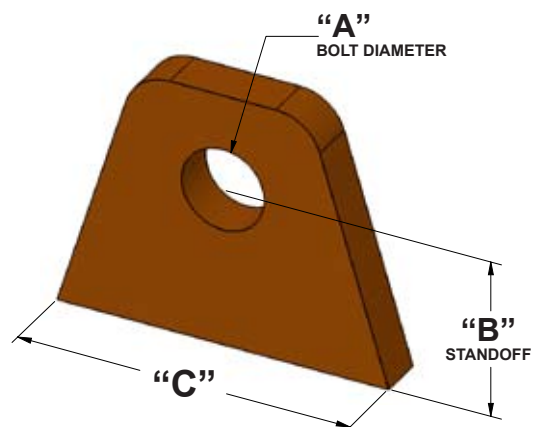


12080-4

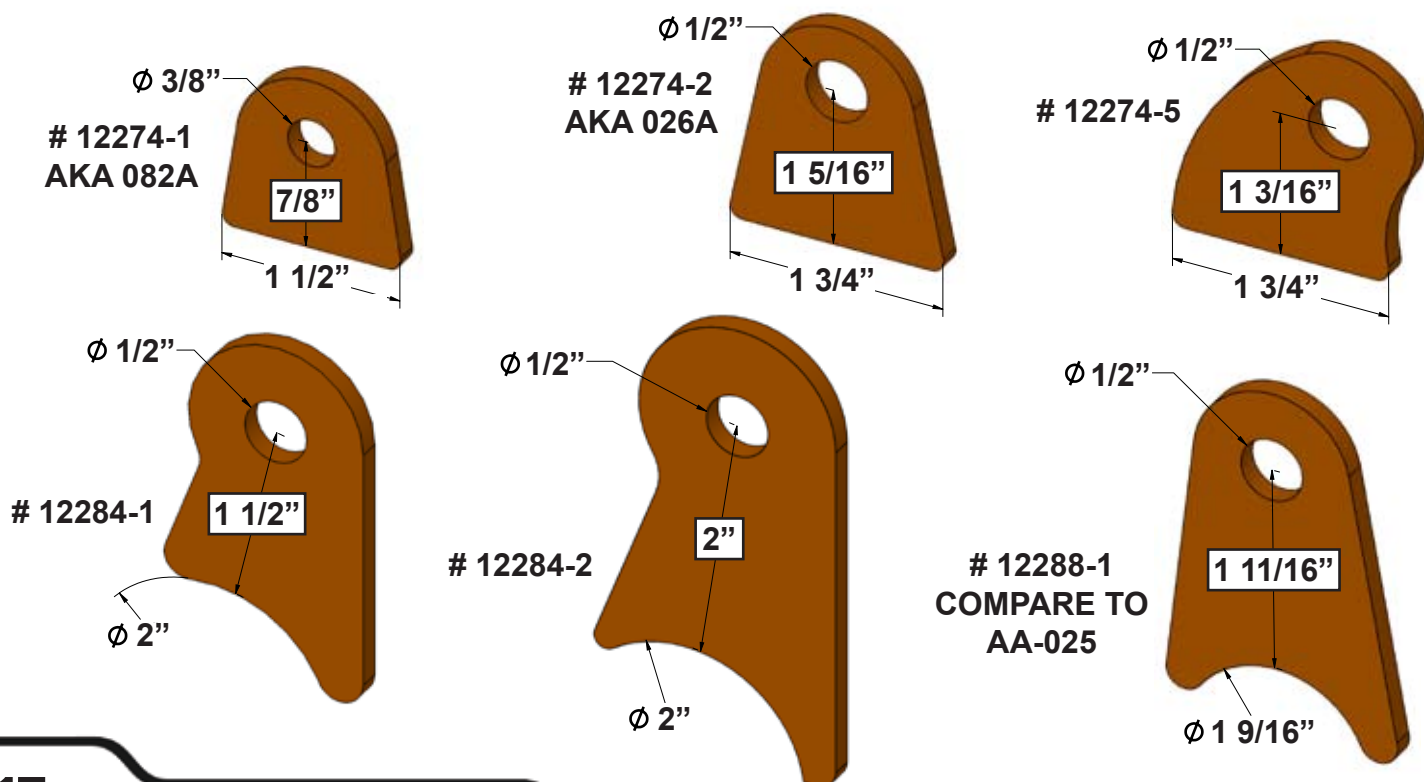
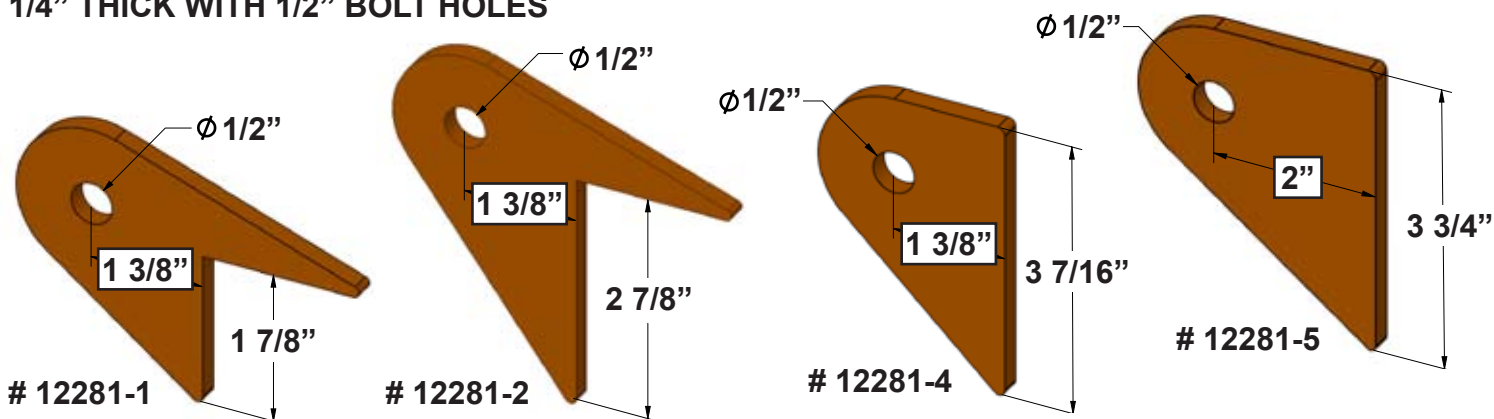
AXLE SHOCK MOUNTING TABS



A	B	C	THICKNESS	PART #
5/16"	5/8"	1.3"	1/8"	12277-1
3/8"	3/4"	1.6"	3/16"	12277-2
1/2"	7/8"	2"	3/16"	12277-3A
	7/8"	2"	1/4"	12277-3B
	1 1/4"	2"	1/4"	12277-4



1/4" THICK WITH 1/2" BOLT HOLES



AXLE BRACKETS



12263-1 (1/2" HOLE)
12263-2 (5/8" HOLE)
12263-3 (3/4" HOLE)



12264-1 (1/2" HOLE)
12264-2 (5/8" HOLE)
12264-3 (3/4" HOLE)



12265-1 (1/2" HOLE)
12265-2 (5/8" HOLE)
12265-3 (3/4" HOLE)



12266-1 (1/2" HOLE)
12266-2 (5/8" HOLE)
12266-3 (3/4" HOLE)

TRAILING ARM
BRACKET
5 HOLE



12267-1 (1/2" HOLE)
12267-2 (5/8" HOLE)
12267-3 (3/4" HOLE)

TRAILING ARM
BRACKET
6 HOLE



12268-1 (1/2" HOLE)
12268-2 (5/8" HOLE)
12268-3 (3/4" HOLE)



12269-1 (1/2" HOLE)
12269-2 (5/8" HOLE)
12269-3 (3/4" HOLE)



12270-1 (1/2" HOLE)
12270-2 (5/8" HOLE)
12270-3 (3/4" HOLE)



12271-1 (1/2" HOLE)
12271-2 (5/8" HOLE)
12271-3 (3/4" HOLE)



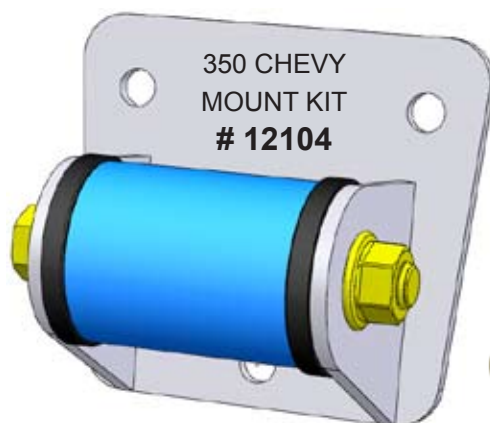
12272-1 (1/2" HOLE)
12272-2 (5/8" HOLE)
12272-3 (3/4" HOLE)

ADJUSTABLE SHOCK
MOUNT COMES IN
PAIRS FOR ONE AXLE
12273



MISC. MOUNTS

CHEVY MOTOR MOUNTS



12107-01



12107-02



12107-03



12106 LS1 CHEVY MOTOR
MOUNT PLATE. 1/4" MATERIAL

VW POWER STEERING PUMP MOUNTS



TYPE 1 VW POWER STEERING PUMP MOUNT
00405



TYPE 4 VW POWER STEERING
PUMP MOUNT # 00406

BATTERY TRAYS



OPTIMA BATTERY TRAY
00401



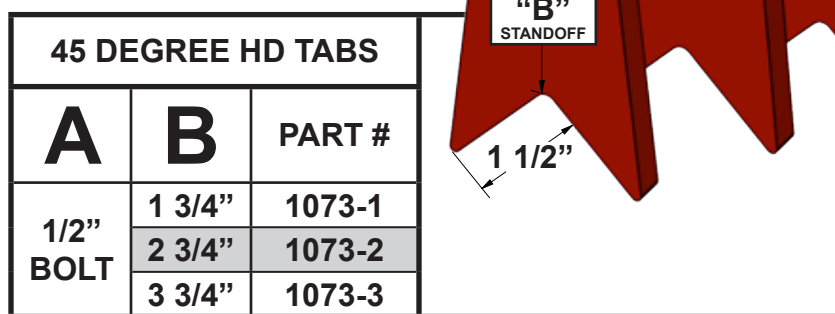
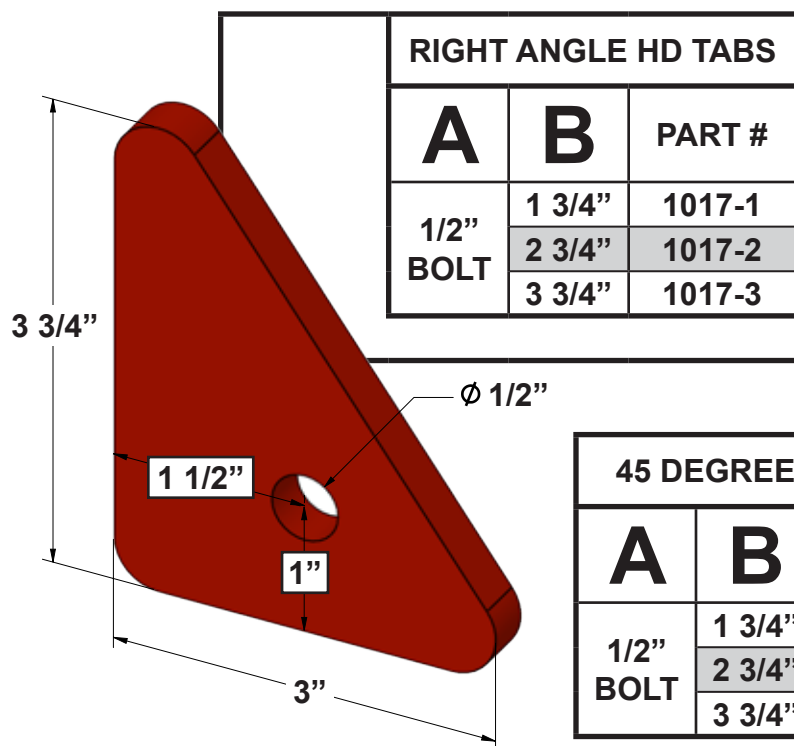
STANDARD BATTERY TRAY
00402



ODYSSEY BATTERY TRAY
00403



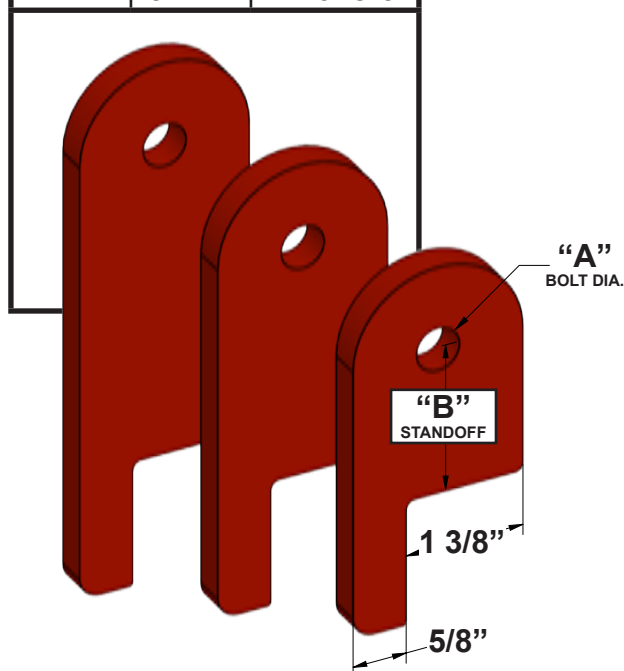
U-1 BATTERY TRAY
00404



"A"
BOLT DIA.

"B"
STANDOFF

90 DEGREE HD TABS		
A	B	PART #
1/2" BOLT	1 1/2"	# 1078-1
	2 1/2"	# 1078-2
	3 1/2"	# 1078-3



"A"
BOLT DIA.

"B"
STANDOFF

HD SHOCK TABS				
A	B	1 1/2" TUBE DIA.	1 3/4" TUBE DIA.	2" TUBE DIA.
1/2" BOLT	1 1/2"	1074-1	1074-4	1074-7
	2 1/2"	1074-2	1074-5	1074-8
	3 1/2"	1074-3	1074-6	1074-9

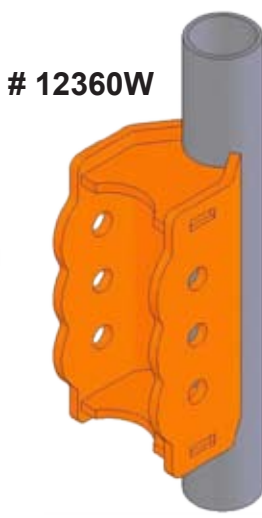
"A"
BOLT DIA.

"B"
STANDOFF

TUBE DIA.



12360



12360W



12362
CENTER LINK MOUNT
ADJUSTABLE 10 - 25 DEGREES



LEFT AND RIGHT SIDE
CHASSIS MOUNT LINK
BRACKETS

12365-01 STRAIGHT UPPER AND LOWER
12365-10 10 DEGREE UPPER AND STRAIGHT LOWER



12368



12378-00

TRAILING LINK ARM AXLE MOUNT	
ANGLE	PART #
STRAIGHT	12378-00
5 DEGREE	12378-05
8 DEGREE	12378-08
10 DEGREE	12378-10

REAR FOUR LINK TRAILING ARMS



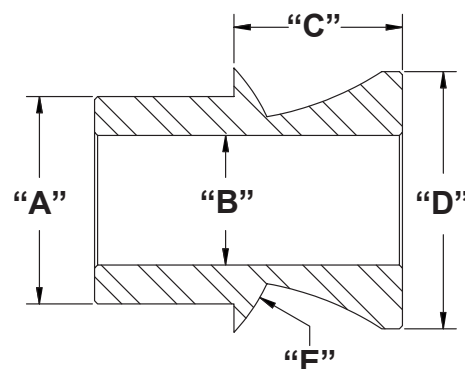
50" MODEL SHOWN. 4130 CONSTRUCTION. OPTIONS INCLUDE; BEARINGS, HI-MIS ALIGNMENT SPACERS, BOLTS. OTHER SIZES COMING

AXLE MOUNTS

TRAILING LINK AXLE MOUNT. 3.0" ID
WIDTH FITS 3.0", 3.5", & 4.0" AXLE TUBE
DIAMETERS. **# 12380-400**



HIGH ANGLE MISALIGNMENT SPACERS						
SIZE OD. (A)	BOLT DIA. (B)	HEIGHT (C)	FLAT SIZE (D)	BALL DIA. (E)	STACK HEIGHT	PART #
5/8"	1/2"	.5	7/8"	1.125"	1 3/4"	051-1008B3
3/4"	1/2"	.437	1"	1.31"	1 3/4"	051-1208C3
		.469	1"	1.31"	1 13/16"	051-1208C3.5
		.5	1"	1.31"	1 7/8"	051-1208C4
		.563	1"	1.31"	2"	051-1208C5
3/4"	5/8"	.437	1"	1.31"	1 3/4"	051-1210C3
		.5	1"	1.31"	1 7/8"	051-1210C4
		.563	1"	1.31"	2"	051-1210C5
7/8"	5/8"	.625	1 1/8"	1.375"	2 1/8"	051-1410E2
		.687	1 1/8"	1.375"	2 1/4"	051-1410E3
		.813	1 1/8"	1.375"	2 1/2"	051-1410E5
		.875	1 1/8"	1.375"	2 5/8"	051-1410E6
		.938	1 1/8"	1.375"	2 3/4"	051-1410E7
		1.063	1 1/8"	1.375"	3"	051-1410E9
1"	5/8"	.563	1 1/8"	1.875"	2 1/2"	051-1610H3
		.625	1 1/8"	1.875"	2 5/8"	051-1610H3.5
		.688	1 1/8"	1.875"	2 3/4"	051-1610H4
		.813	1 1/8"	1.875"	3"	051-1610H5
1"	3/4"	.563	1 1/8"	1.875"	2 1/2"	051-1612H3
		.625	1 1/8"	1.875"	2 5/8"	051-1612H3.5
		.688	1 1/8"	1.875"	2 3/4"	051-1612H4
		.813	1 1/8"	1.875"	3"	051-1612H5
1 1/4"	3/4"	.906	1 5/8"	2"	3"	051-2012J3
1 1/2"	3/4"	.813	1 1/2"	2.312"	3"	051-2412L4
		1.313	1 1/2"	2.312"	4"	051-2412L8

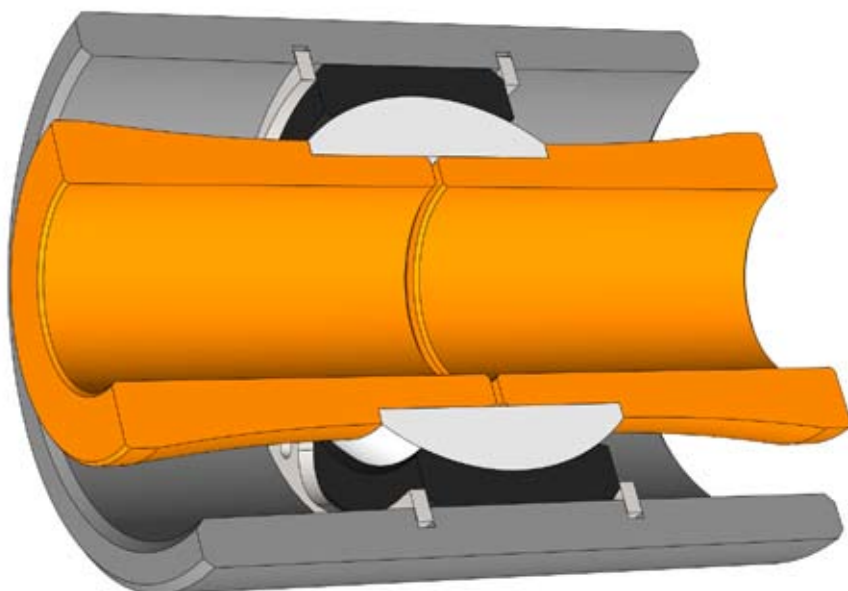
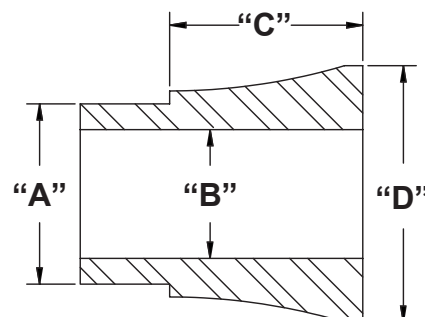


LOW ANGLE SPACERS



LOW ANGLE MISALIGNMENT SPACERS					
SIZE OD. (A)	BOLT DIA. (B)	HEIGHT (C)	FLAT SIZE (D)	STACK HEIGHT	PART #
3/4"	1/2"	.815	1 1/8"	2 1/2"	052-1208C0
	5/8"	.815	1 1/8"	2 1/2"	052-1210C0
7/8"	1/2"	.813	1 1/4"	2 1/2"	052-1408E5
	5/8"	.813	1 1/4"	2 1/2"	052-1410E5
		.938	1 1/4"	2 3/4"	052-1410E7
		1.063	1 1/4"	3"	052-1410E9
1"	14mm	.662	1 1/4"	2 21/64"	052-16M1
1"	1/2"	.75	1 1/4"	2 1/2"	052-1608G3
	9/16"	.813	1 1/4"	2 5/8"	052-1609G3.5
	5/8"	.75	1 1/4"	2 1/2"	052-1610G3
		.813	1 1/4"	2 5/8"	052-1610G3.5
		.875	1 1/4"	2 3/4"	052-1610B4
		1	1 1/4"	3"	052-1610B5
1"	3/4"	.813	1 1/4"	2 5/8"	052-1612H3.5
		.875	1 1/4"	2 3/4"	052-1612H4
		1	1 1/4"	3"	052-1612H5
		.813	1 1/2"	3"	052-1612H6

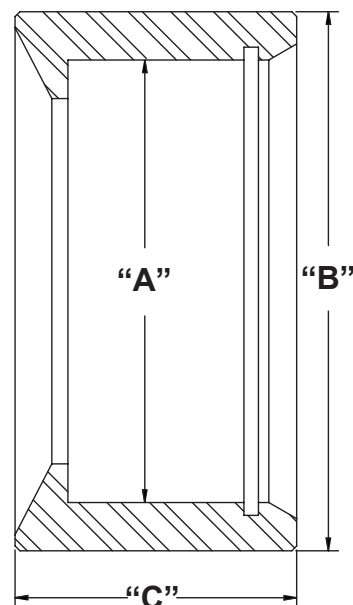
NOTE: LOW ANGLE SPACERS CAN BE USED IN ARM OR LINK PIVOT POINTS. OR USED AS REDUCER BUSHINGS. MADE FROM 303 STAINLESS STEEL.





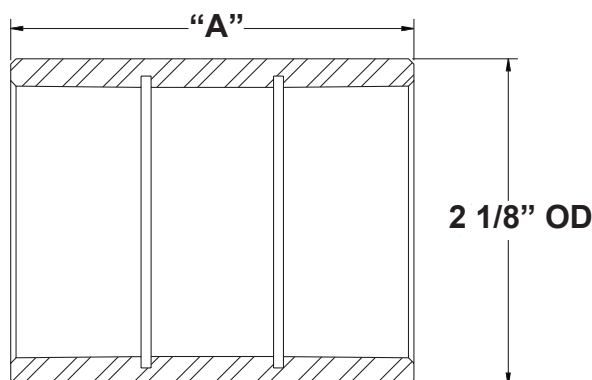
UNI-BALL CUPS

BEARING	ID (A)	OD (B)	HEIGHT (C)	PART #
COM16T	1.752"	2 1/4"	1.300"	TZ06-C1601
HCOM16T	2"	2 3/8"	1 1/4"	TZ06-H1601
		2 1/2"	1 1/2"	TZ06-H1602
WPB16T	2 1/8"	2 5/8"	1 1/2"	TZ06-W1601
			1 3/4"	TZ06-W1602
			2 1/2"	TZ06-W1605
			3"	TZ06-W1606
HCOM20T	2 3/8"	2.900"	1 5/8"	TZ06-H2001
		2 7/8"	1 3/4"	TZ06-H2002
		2.900"	2 1/2"	TZ06-H2005
HCOM24T	2 3/4"	3.350"	1 3/4"	TZ06-H2401



UNI-BALL PIVOT HOUSINGS

BEARING	WIDTH (A)	PART #
COM16T	1.350"	TZ06-TC1651
	1.800"	TZ06-TC1652
	2.085"	TZ06-TC1653
	2.250"	TZ06-TC1654
	2.625"	TZ06-TC1655



BLUNT TUBE ADAPTERS

THREAD SIZE	TUBE DIAMETER	WALL THICKNESS	RIGHT HAND PART #	LEFT HAND PART #
1/2" – 20 UNF	7/8"	.083	*4214-3.5-08	*4314-3.5-08
	1"	.065	*4216-3-08	*4316-3-08
	1"	.095	4216-4-08	4316-4-08
	1"	.120	4216-5-08	4316-5-08
5/8" – 18 UNF	1"	.065	*4216-3-10	*4316-3-10
	1"	.095	4216-4-10	4316-4-10
	1"	.120	4216-5-10	4316-5-10
	1 1/4"	.120	4220-5-10	4320-5-10
3/4" – 16 UNF	1 1/4"	.120	4220-5-12	4320-5-12
	1 1/2"	.120	4224-5-12	4324-5-12
	1 3/4"	.120	*4228-5-12	*4328-5-12
7/8" – 14 UNF	1 1/4"	.120	4220-5-14	4320-5-14
	1 1/2"	.120	4224-5-14	4324-5-14
	1 5/8"	.120	*4226-5-14	*4326-5-14
	1 3/4"	.120	*4228-5-14	*4328-5-14
1 1/4" – 12 UNF	1 3/4"	.120	*4228-5-20	*4328-5-20

* NOTE: PART #S IN ITALICS ARE NOT IN STOCK. SPECIAL ORDER ONLY AT THIS TIME.



THREAD SIZE	TUBE DIAMETER	WALL THICKNESS	RIGHT HAND PART #	LEFT HAND PART #
3/8" – 24 UNF	3/4"	.065	*4012-3-06	*4112-3-06
	7/8"	.065	*4014-3-06	*4114-3-06
	1"	.065	4016-3-06	4116-3-06
	1"	.095	4016-4-06	4116-4-06
1/2" – 20 UNF	7/8"	.083	*4014-3.5-08	*4114-3.5-08
	1"	.065	4016-3-08	4116-3-08
	1"	.095	4016-4-08	4116-4-08
	1"	.120	4016-5-08	4116-5-08
5/8" – 18 UNF	1"	.065	*4016-3-10	*4116-3-10
	1"	.095	4016-4-10	4116-4-10
	1"	.120	4016-5-10	4116-5-10
	1 1/4"	.120	4020-5-10	4120-5-10
3/4" – 16 UNF	1 1/4"	.120	*4020-5-12	*4120-5-12
	1 1/2"	.120	4024-5-12	4124-5-12
	1 3/4"	.120	*4028-5-12	*4128-5-12
7/8" – 14 UNF	1 1/2"	.120	4024-5-14	4124-5-14
	1 5/8"	.120	*4026-5-14	*4126-5-14
	1 3/4"	.120	*4028-5-14	*4128-5-14

* NOTE: PART #S IN ITALICS ARE NOT IN STOCK. SPECIAL ORDER ONLY AT THIS TIME.



HEX TUBE ADAPTERS



THREAD SIZE	TUBE DIAMETER	WALL THICKNESS	RIGHT HAND PART #	LEFT HAND PART #
1/2" - 20 UNF	1"	.065	4416-3-08	4516-3-08
	1"	.095	4416-4-08	4516-4-08
	1"	.120	4416-5-08	4516-5-08
5/8" - 18 UNF	1"	.095	4416-4-10	4516-4-10
	1"	.120	4416-5-10	4516-5-10
	1 1/4"	.095	4420-4-10	4520-4-10
	1 1/4"	.120	4420-5-10	4520-5-10
3/4" - 16 UNF	1 1/4"	.120	4420-5-12	4520-5-12
	1 1/2"	.120	4424-5-12	4524-5-12
	1 3/4"	.120	4428-5-12	4528-5-12
7/8" - 14 UNF	1 1/2"	.120	4424-5-14	4524-5-14
	1 5/8"	.120	*4426-5-14	*4526-5-14
	1 3/4"	.120	4428-5-14	4528-5-14
1" - 14 UNF	1 1/2"	.120	*4424-5-16	*4524-5-16
	1 3/4"	.120	4428-5-16	4528-5-16
	2"	.120	*4432-5-16	*4532-5-16
1" - 12 UNF	1 3/4"	.120	4428-5-16C	4528-5-16C
	2"	.120	4432-5-16C	4532-5-16C
1 1/4" - 12 UNF	1 3/4"	.120	4428-5-20	4528-5-20
	2"	.120	4432-5-20	4532-5-20

* NOTE: PART #S IN ITALICS ARE NOT IN STOCK. SPECIAL ORDER ONLY AT THIS TIME.



BEEF-UP WASHERS

PART #	DESCRIPTION
TZ01-60621	1/2" ID X 1 1/4" OD X .15" THICK
TZ01-60622	1/2" ID X 1 1/4" OD X .25" THICK
TZ01-60631	5/8" ID X 1 1/4" OD X .19" THICK
TZ01-60632	5/8" ID X 1 1/4" OD X .25" THICK



TZ01-60621 # TZ01-60622



TZ01-60631 # TZ01-60632

SHOCK BOSSES

PART #	DESCRIPTION
TZ01-60601	1/2" SHOCK / BOLT BOSS
TZ01-60602	1/2" STEER BOLT BOSS
TZ01-60603	1/2" STEER BOLT BOSS
TZ01-60605	EXTNDED LENGTH SHOCK BOSS
TZ01-60611	1/2" SHOCK BOSS
TZ01-60612	5/8" SHOCK BOSS



TZ01-60601 # TZ01-60602



TZ01-60603 # TZ01-60605



TZ01-60611 # TZ01-60612

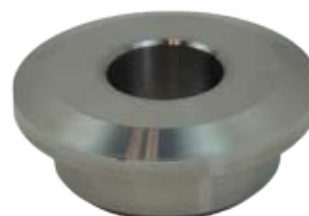
WELD IN BOLT SUPPORT BOSSES

PART #	DESCRIPTION
TZ01-60670-1	1/2" X 1 3/4" OD, TAPERED CUT
TZ01-60670-2	9/16" X 1 3/4" OD, TAPERED CUT
TZ01-60670-3	5/8" X 1 3/4" OD, TAPERED CUT
TZ01-60671-1	1/2" X 1 3/4" OD, FLAT CUT
TZ01-60671-2	9/16" X 1 3/4" OD, FLAT CUT
TZ01-60671-3	5/8" X 1 3/4" OD, FLAT CUT
TZ01-60675	3/4" X 2" OD

#TZ01-60670-1

#TZ01-60670-3

#TZ01-60675





ROD END SPACERS	
PART #	DESCRIPTION
SG0805	1/2"ID X 5/16" THICK - 1 1/4" STACK
SG0806	1/2"ID X 3/8" THICK - 1 3/8" STACK
SG0807	1/2"ID X 7/16" THICK - 1 1/2" STACK
SG0808	1/2"ID X 1/2" THICK - 1 5/8" STACK
SG1004	5/8"ID X 1/4" THICK - 1 1/4" STACK
SG1006	5/8"ID X 3/8" THICK - 1 1/2" STACK
SG1008	5/8"ID X 1/2" THICK - 1 3/4" STACK
SG1207	3/4"ID X 7/16" THICK - 1 3/4" STACK
SG1208	3/4"ID X 1/2" THICK - 1 7/8" STACK
SG1209	3/4"ID X 9/16" THICK - 2" STACK

TZ01-0505L - LEFT HAND THREAD
TZ01-0505R - RIGHT HAND THREAD



TZ01-0506L - LEFT HAND THREAD
TZ01-0506R - RIGHT HAND THREAD



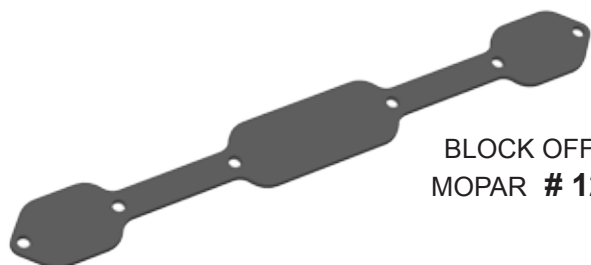
TZ01-0507L - LEFT HAND THREAD
TZ01-0507R - RIGHT HAND THREAD

TZ02-51014 - PINCH CLAMP





440 MOPAR
12120



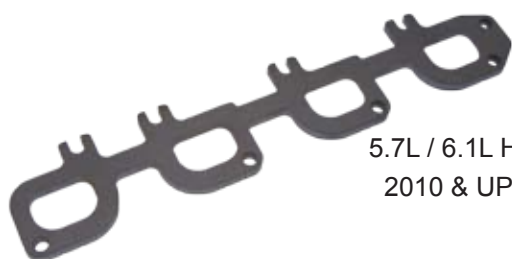
BLOCK OFF 440
MOPAR # 12120



5.7L HEMI WITH EGR
12121-1A



5.7L HEMI NON EGR
12121-1B



5.7L / 6.1L HEMI WITH EGR
2010 & UP # 12121-2A



5.7L / 6.1L HEMI NON EGR
2010 & UP # 12121-2B



VIPER: UP TO '02
#12122-1



VIPER: '03 - '07
#12122-2



VIPER: '08 AND UP
#12122-3



NORTHSTAR V-8
PRE 2001 # 12129-1



NORTHSTAR V-8
2001 # 12129-2



GM 3.8L V-6 SUPERCHARGED
12130-1

EXHAUST HEADER FLANGES



GM 4.3L V-6
12127-1



SMALL BLOCK FORD
12133-1



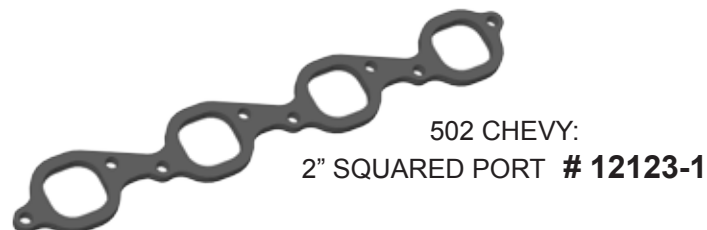
460 FORD
12134-1



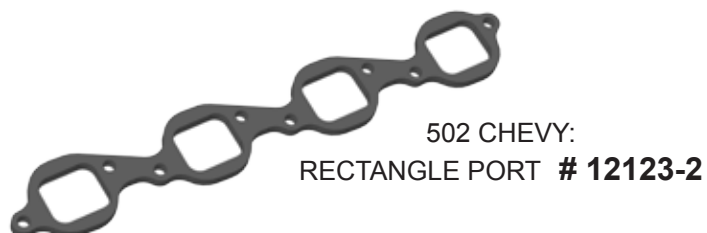
428 FORD # 12134-6



SCAT V-4 # 12128-1



502 CHEVY:
2" SQUARED PORT # 12123-1



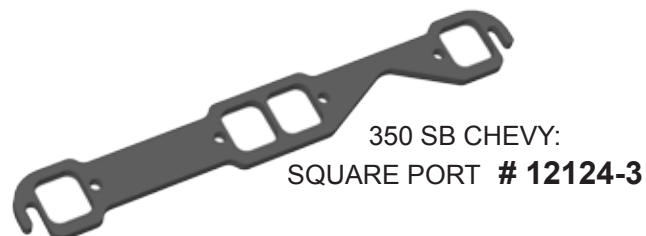
502 CHEVY:
RECTANGLE PORT # 12123-2



350 SB CHEVY 1.625"
12124-1



350 SB CHEVY 1.75"
12124-2



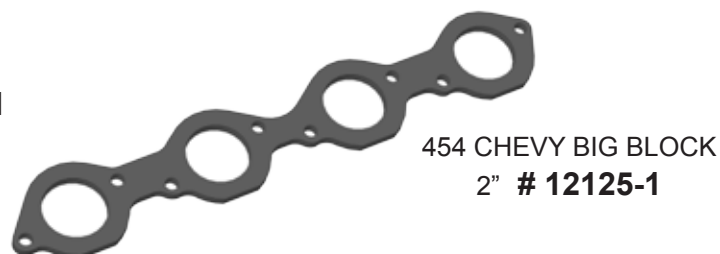
350 SB CHEVY:
SQUARE PORT # 12124-3



350 SB CHEVY 1-3/4" TUBE
12124-5



350 SB CHEVY 1-7/8" TUBE
12124-6



454 CHEVY BIG BLOCK
2" # 12125-1



454 CHEVY BIG BLOCK
2 1/4" # 12125-2



CHEVY - LS1 1-5/8"
12126-1



CHEVY - LS1 1-3/4"
12126-2



SB CHEVY - LS1 1-3/4"
12126-2A



SB CHEVY - LS1 1-7/8"
12126-4



SB CHEVY - LS1 2"
12126-5



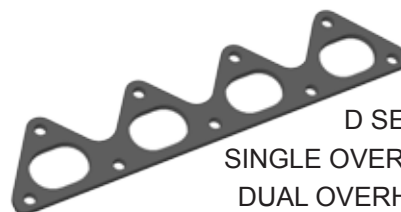
SB CHEVY - LS6
12126-3



SB CHEVY LS1 D PORT
12126-6



V-6 ACURA # 12136-1



D SERIES HONDA -
SINGLE OVERHEAD CAM # 12136-2
DUAL OVERHEAD CAM # 12136-4



MID - LATE 80'S
HONDA V-6 # 12136-3



'97-UP 3.0L V-6
NISSAN # 12137-1



V-6 NISSAN
12137-2



NISSAN V-6 300Z
12137-3

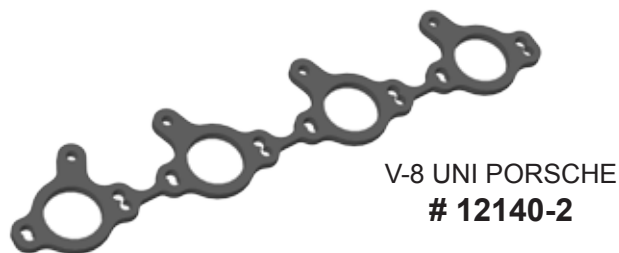


6 CLY TOYOTA CELICA
SUPRA # 12139-1

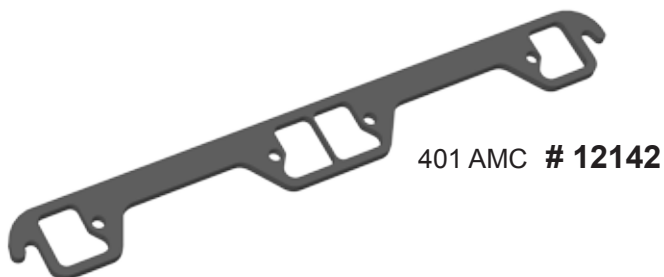
EXHAUST HEADER FLANGES



V-8 PORSCHE
12140-1

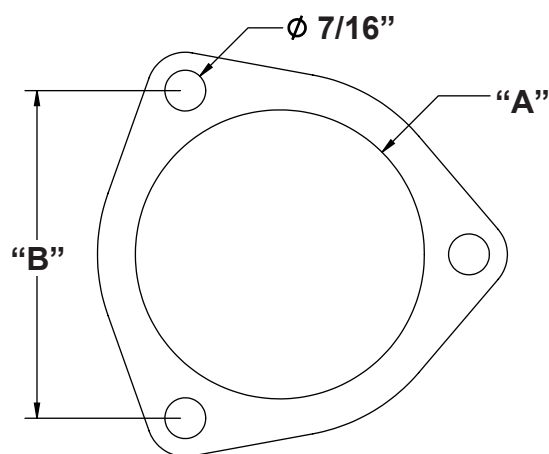


V-8 UNI PORSCHE
12140-2



401 AMC # 12142


SUBARU EXHAUST # 12143



WASTE GATE FLANGES
DELTA GATE # 12150-1
TAIL GATE # 12150-2



VW FLANGES
1 1/2" # 12151-1
1 5/8" # 12152-1
1 3/4" # 12153-1

2 BOLT FLANGES			
	A	B	PART #
	1 3/4"	3"	12155-1
	2"	3"	12155-2
	2 1/4"	3 1/2"	12155-3

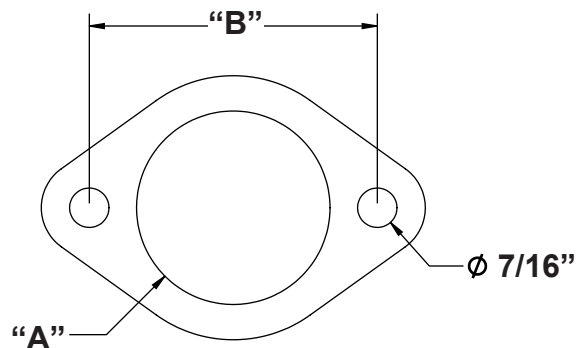


12149-A



12149-B

HEADER A AND B TABS
ALSO AVAILABLE IN STAINLESS STEEL

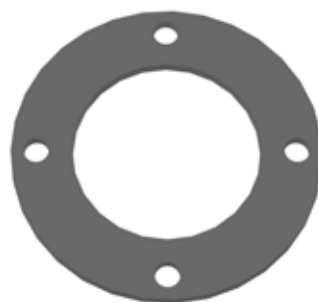




MAZDA SPEED
PROTOGE UPPER
DOWN PIPE **#12188**



95-98 NISSAN SENTRA
TURBO DOWN PIPE
2 1/2" ID **#12189-1**
3" ID **#12189-1**



DISCHARGE FLANGE
#12190



CHRYSLER TURBO
HOUSING INTAKE
FLANGE **#12191-1**



TURBO FLANGE WITH
2 1/16" ROUND HOLE
#12192



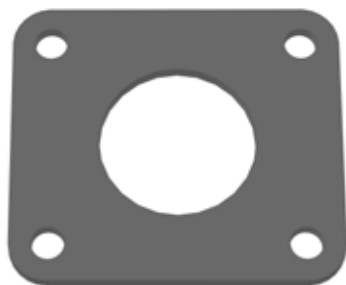
TURBO T-2 **#12193**



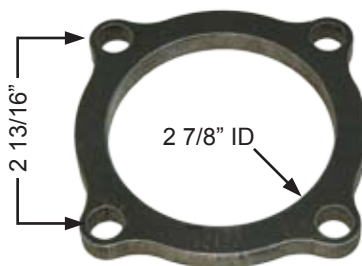
TURBO T-3 **#12194**



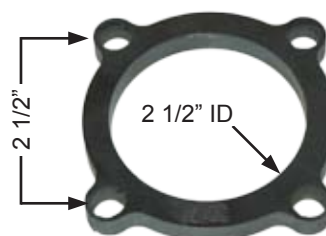
TURBO T-4 **#12195**



TURBO T-4 FLANGE
WITH 2" ROUND HOLE
#12196



SWITZER TURBO
FLANGE **#12197**



TURBO FLANGE
#12198



T-3 DISCHARGE FLANGE
#12196



T-3 DISCHARGE
FLANGE - 3 BOLT
2" ID **#12200-1**
1 5/8" ID **#12200-2**



GT 28 FLANGE
#12201

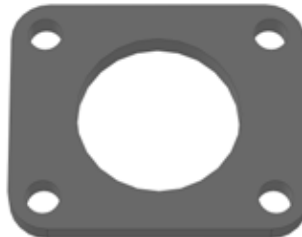
EXHAUST TURBO FLANGES



SUBARU DISCHARGE
FLANGE **#12202**



NISSAN VG-30 **#12203**



MITSUBISHI TD04
WITH 2" HOLE **#12204**



DISCHARGE FLANGE
2 7/16" ID 3 BOLT
#12205



GT 35 DISCHARGE
FLANGE **#12206**



MITSUBISHI TC04
OUTLET **#12207-1**



MITSUBISHI TC04 INLET
#12207-2



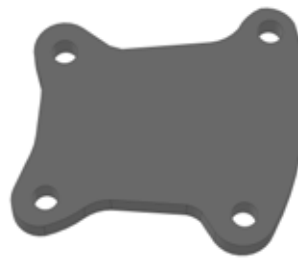
T-28 DISCHARGE FLANGE
#12208



GT-22 DISCHARGE
#12209



GT-12 INTAKE
#12210-1



GT-12 OUTLET
#12210-2



ECOTEC STK EXHAUST
TO MUFFLER
#12211-1

ORDERS: MINIMUM ORDER IS \$25.00 PLUS SHIPPING AND HANDLING

Terms: All orders are to be prepaid prior to shipment. We accept Visa, MasterCard, Discover, and certified checks. Sorry, no C.O.D. orders or personal checks accepted.

Deposits: A 50% deposit is required on all custom built and special order merchandise. All deposits are non-refundable.

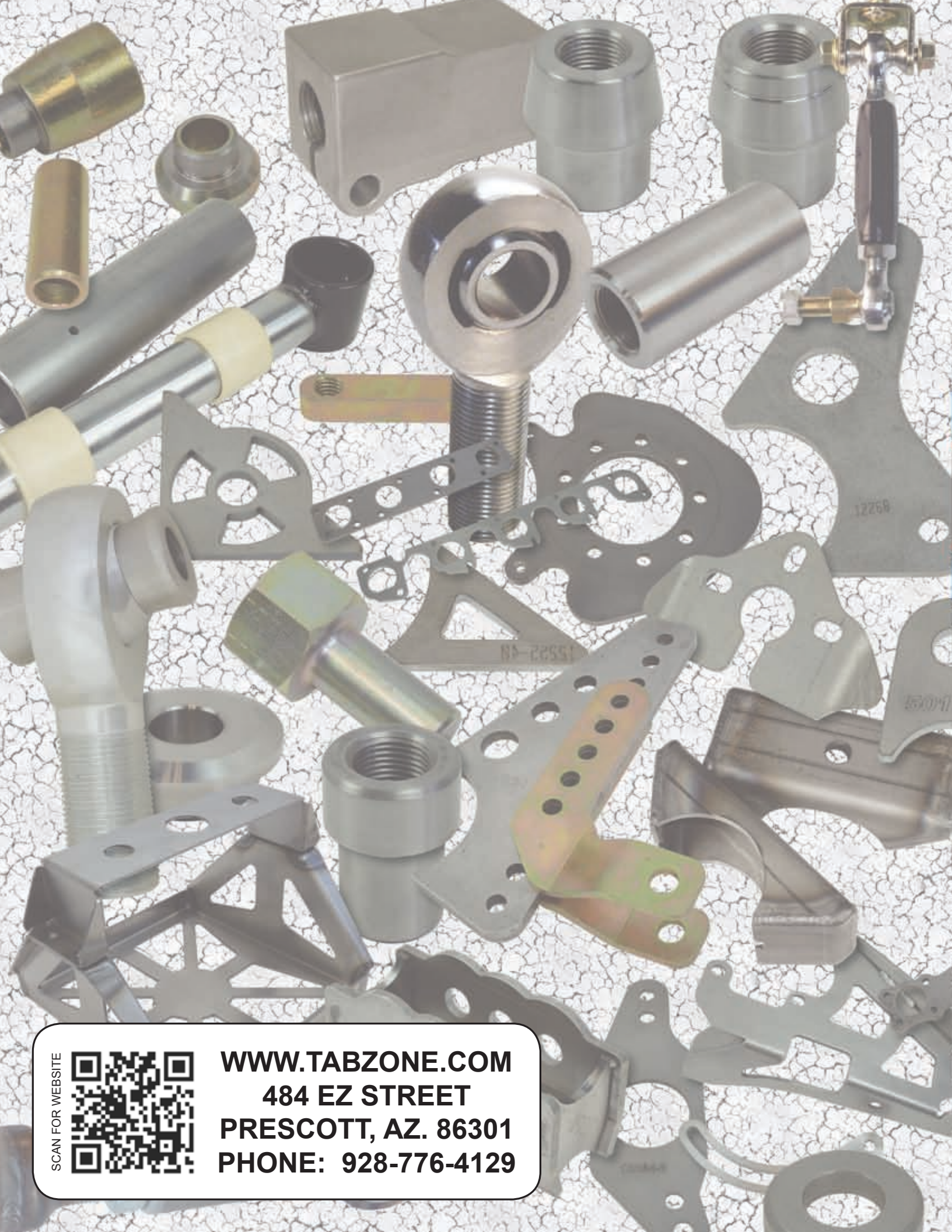
Returns: No returns accepted after 30 days from the invoice date. There will be a **20% RESTOCKING FEE** for any returned goods. No returns on custom built or special order merchandise.

Delivery: All merchandise will be shipped either UPS or truck freight. We ship orders via UPS "ground" unless otherwise specified. Additional fees will be charged accordingly for the additional freight charge.

Claims: Damage claims must be made immediately with the carrier (i.e. UPS). Although every effort is made to ensure that each order is correct & complete, you must inspect contents against packing slip as soon as you receive it. Claims regarding content errors must be reported within 48 hours of receipt of order.

Warranty: These products are intended for **RACING OR OFF-ROAD USE ONLY**. There are **no warranties**, either expressed or implied. Neither the seller nor the manufacturer will be liable for any loss, damage or injury directly or indirectly arising from the use or inability to determine the appropriate use of these products. Before any attempt at using the product, the user shall determine suitability of the product(s) for its intended use and the user shall accept & assume all responsibility and risk.

NOTES



SCAN FOR WEBSITE



WWW.TABZONE.COM
484 EZ STREET
PRESCOTT, AZ. 86301
PHONE: 928-776-4129